

Heated chip storer



CME 410 RF.

Heated chip storer.

- Heated by 1 kW infrared lamp.
- Supplied without shelves.
- Open bay.
- Drain valve.
- Electric supply: 230 V single phase.



CME 410 RF

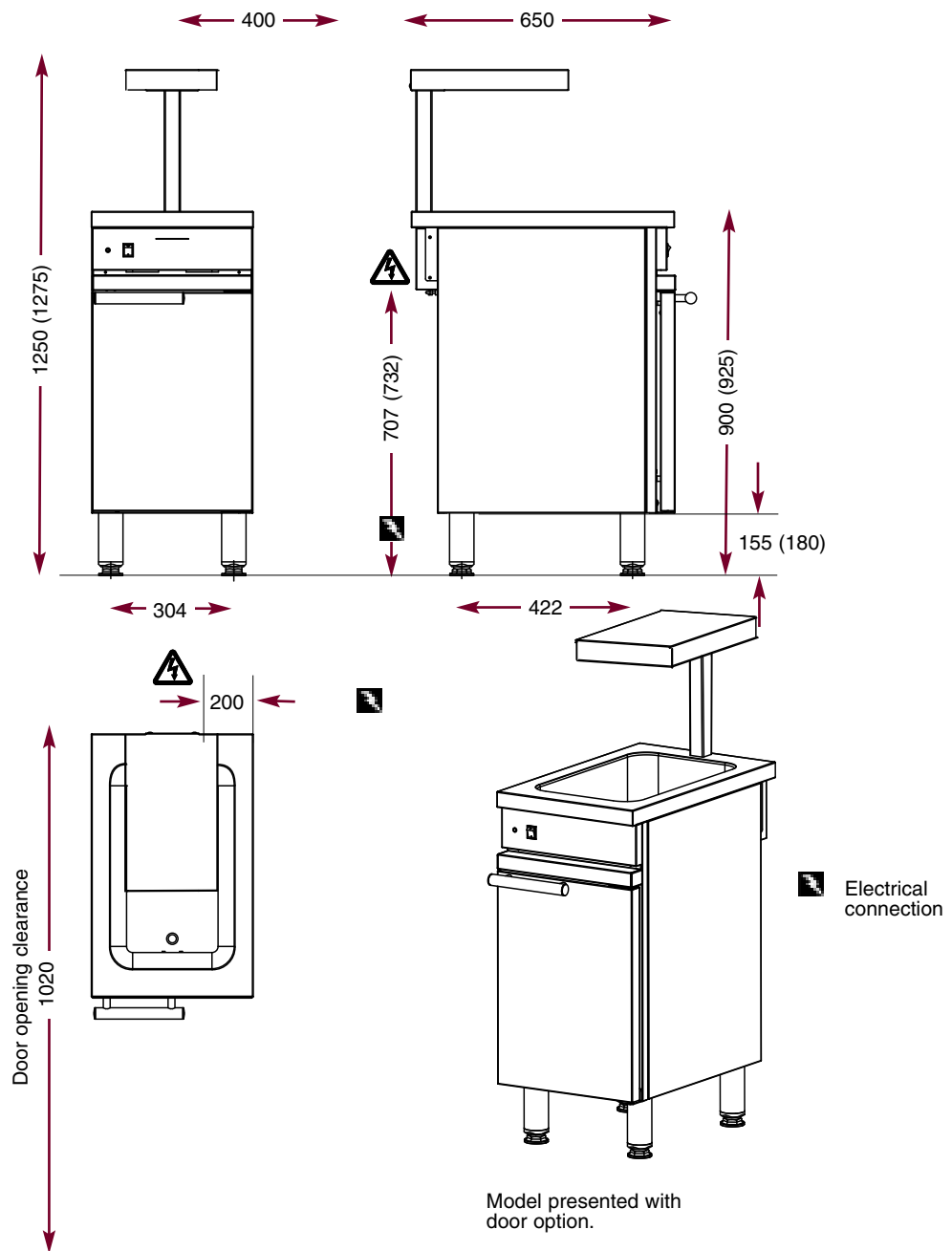
W 400 - D 650 - H 900

Shelves options - 5 levels for Gastronorm 1/1 containers.

ECH 400

Heated chip storer

CME 410 RF



The Chef's Choice.

N° 74 - 2